

PART OF THE NW.1/4, OF SECTION 8, T.6N., R.2W., S.L.B. & M.

427

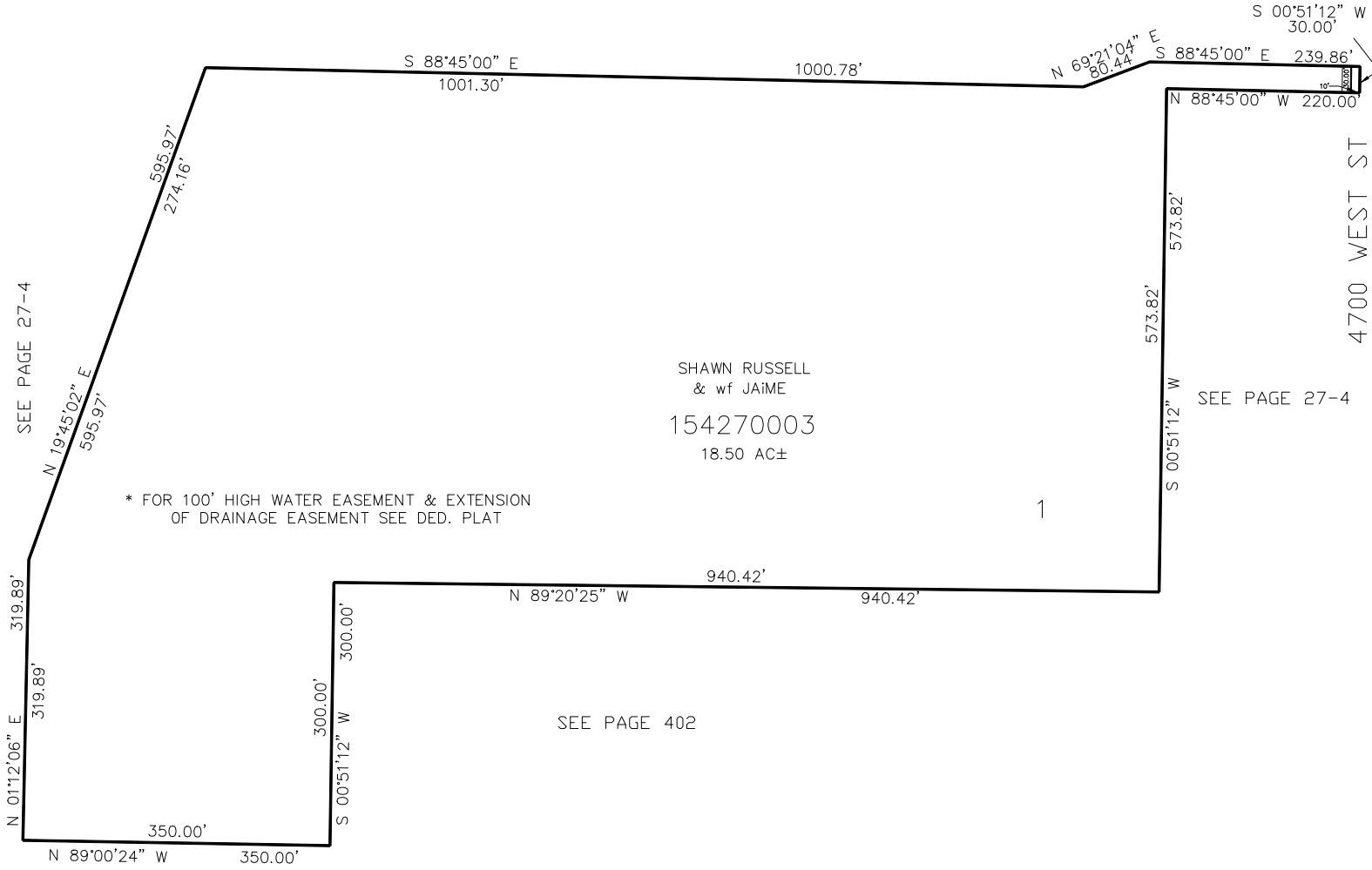
RUSSELL ACRES

IN WEBER COUNTY

TAXING UNIT: 516

SCALE 1" = 100'

SEE PAGE 27-4



* FOR 100' HIGH WATER EASEMENT & EXTENSION OF DRAINAGE EASEMENT SEE DED. PLAT

10' UTILITY & DRAINAGE EASEMENTS EACH SIDE OF PROPERTY LINES AS INDICATED BY DASHED LINES EXCEPT AS OTHERWISE SHOWN.

FOR COMPLETE ENG DATA SEE ORIGINAL DEDICATION PLAT IN BOOK 64, PAGE 35 OF RECORDS.